

## DONOR CARD

### My Commitment to Share Life

I, \_\_\_\_\_, have spoken to my family about tissue and organ donation. I wish to donate the following:

- Any needed tissues and organs
- Only the following tissues and organs:  
\_\_\_\_\_

Donor Signature: \_\_\_\_\_

The following people have witnessed my commitment to be a donor:

Witness \_\_\_\_\_

Witness \_\_\_\_\_

[www.communitytissue.org](http://www.communitytissue.org)

## FAMILY CARD

### Family Notification Form

Dear \_\_\_\_\_  
(family)

I would like to donate LIFE by being a tissue and organ donor. I want you to know my decision because you will be consulted before donation can take place.

I wish to donate the following:

- any needed tissues and organs
- only the following tissues and organs:  
\_\_\_\_\_

Thank you for honoring my commitment to donate LIFE through tissue and organ donation.

Donor  
Signature \_\_\_\_\_

Date \_\_\_\_\_

[www.communitytissue.org](http://www.communitytissue.org)

## GET THE FACTS ABOUT DONATION

**MYTH** If someone is in an accident and the hospital knows they want to be a donor, the doctors won't try to save their life.

**FACT** Unlike what you see on fictional television shows, the medical team treating the patient is separate from the transplant team. The transplant team is not notified until all lifesaving efforts have failed and death has been determined.

**MYTH** A donor's family has to pay additional expenses.

**FACT** There is no charge to the family for donation of tissue and organs.

**MYTH** Many people believe their religion does not approve of donation.

**FACT** Most major religions approve of donation and consider it a generous act that is the individual's choice.

**MYTH** Donation will prevent you from having a traditional funeral.

**FACT** Donation does not interfere with customary funeral practices, including an open casket viewing.

*Consider, Decide, Commit...  
Become a Tissue & Organ Donor*

## COMMUNITY TISSUE SERVICES

### Headquarters

DAYTON, OH  
937-222-0228  
800-684-7783

### Branches

FORT WORTH, TX  
817-332-1898  
800-905-2556

FRESNO, CA  
559-224-1168  
800-201-8477

INDIANAPOLIS, IN  
317-842-0009  
800-984-7783

PHILADELPHIA, PA  
215-937-9662  
800-456-5445

PORTLAND, OR  
503-408-9394  
800-545-8668

TOLEDO, OH  
419-536-4924  
866-684-7783

### Satellite Offices

BOISE, ID  
208-389-2194  
866-284-7783

MEDFORD, OR  
541-773-6054  
888-702-5662

YOU DON'T HAVE TO BE A  
**SUPERHERO**  
TO SAVE LIVES



Become a  
Tissue & Organ  
Donor



Community Tissue Services  
A DEPARTMENT OF COMMUNITY BLOOD CENTER

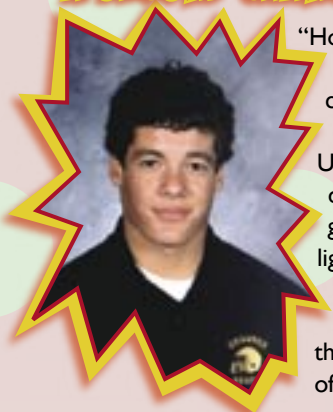
## WHAT DO YOU SAY WHEN SOMEONE ASKS "DO YOU WANT TO BE A TISSUE, ORGAN AND EYE DONOR?"

COMMUNITY TISSUE SERVICES WANTS TO PROVIDE YOU WITH INFORMATION, SO YOU ARE ABLE TO MAKE AN INFORMED DECISION ON DONATION.

## WHAT CAN TISSUE BE USED FOR?

- Ligaments and tendons are most commonly used to repair athletic related injuries such as knee and achilles injuries.
- Heart Valves are used to repair congenital heart defects.
- Saphenous veins are used for vascular disease surgeries, such as a heart by-pass surgery.
- Femoral veins are used for shunts in dialysis patients.
- Skin Grafts are used as a temporary covering to reduce pain and lower the chance of infection in patients with severe burns. Skin grafts can mean the difference between life and death.
- Bone Grafts are used to repair or replace bone after serious injury, bone cancer or crippling disease.
- Vein and Artery grafts re-establish blood circulation in patients with coronary artery disease.
- Corneas are used to restore sight to people with decreased vision or blindness.

## A SECOND CHANCE TO PLAY FOOTBALL...



"Hoping to earn varsity playing time, Nick spent many hours lifting and conditioning for football. He was in top form as the season opened. Unfortunately, he injured his knee during the second quarter of the first game, tearing his anterior cruciate ligament (ACL). This important ligament provides side-to-side stability to the knee joint allowing for the quick starts and stops and changes of direction necessary for most sports.

Our local doctor referred us to a sports medicine specialist. He proposed "reconstruction" of the joint using a cadaver tendon. Usually, a portion of tendon is taken from another location in the knee joint and used for the repair. Using a cadaver tendon would allow for shorter surgery time, less pain post-operatively and shorter recovery period. On the surgeon's recommendation, we agreed to the use of a cadaver tendon.

He returned to school the third day after his surgery. What made the difference in Nick's experience was the use of the donated tendon. Thanks to the donated tendon, he had less pain after his surgery and so was able to bear full weight when walking. His progress in physical therapy amazed the therapists who predicted a limp for at least three months -at three weeks Nick's gait was steady and smooth.

We will always be grateful for the generosity that provided a tendon for Nick's knee repair. From another family's tragedy arose a blessing for ours."

~ Nick's Mom, Mary Caputo

## DID YOU KNOW...

- Close to 1 million tissue transplants are performed each year in the United States.
- Thousands of patients are in need of tissue and organs to live healthier and longer lives.
- One tissue donor can improve the quality of life of up to 75 people.
- Tissue transplantation does not require that the donor and the recipient have the same blood type.

## DID YOU KNOW...

- Everyone is a potential tissue and organ donor. Donation depends on the medical condition at the time of death and test results.
- You should share your decision with family members so they can know and respect your decision.
- One organ donor can save the lives of up to 8 people.

## VALERIE'S GIFT

"On May 24th 2001 three days before her high school graduation, Valerie was killed in a tragic motor vehicle accident and one of our most precious gifts was taken from us. It was by far the hardest day of our lives. But because Valerie was always thinking of others, the one difficult decision that we as a family would have to make was already made. Valerie had signed her donor card when she received her drivers license at age 16. She had also discussed with me her wishes to be a donor so that she could help anyone that needed her tissues or organs.



Three days later we attended Valerie's high school graduation, and we received Valerie's high school diploma. Our entire immediate family along with most of the residents of our hometown of Weiser, Idaho were present at the ceremony to offer their kind support. Valerie reached one more of her goals in life.

Valerie is missed very much by her family and friends. The legacy of inspiration she has left behind to the many residents of our small community is at times overwhelming. She has encouraged many to think about life and all we have to offer and that even after we have passed, we can make miracles happen for many people that may need a transplant. Now, with each and every one of Valerie's tissue grafts that is transplanted, Valerie is able to reach one more of her goals."

~ Valerie's Father, Johnny Lee Camacho

## HOW TO BECOME A DONOR

### Sign a Donor Card

Sign and carry a donor card and have your family members witness the signing of your card.

### Join a State Donor Registry

If your state has a Donor Registry Program, enroll today. Adding your name to a Donor Registry Program is an easy process. The following states have Donor Registry Programs within Community Tissue Services' service area:

Idaho  
Indiana  
Ohio  
Washington

### Bureau of Motor Vehicles

Sign up at the Bureau of Motor Vehicles when you apply for or renew your driver's license or request a State ID card.

## Share your life - Share your decision

At the time of your death, your family will be contacted and asked to provide information about your social and medical history. Share your decision with family members, so they can know and respect your decision.

Visit our website for more information:

[www.communitytissue.org](http://www.communitytissue.org)



Community Tissue Services  
A DEPARTMENT OF COMMUNITY BLOOD CENTER